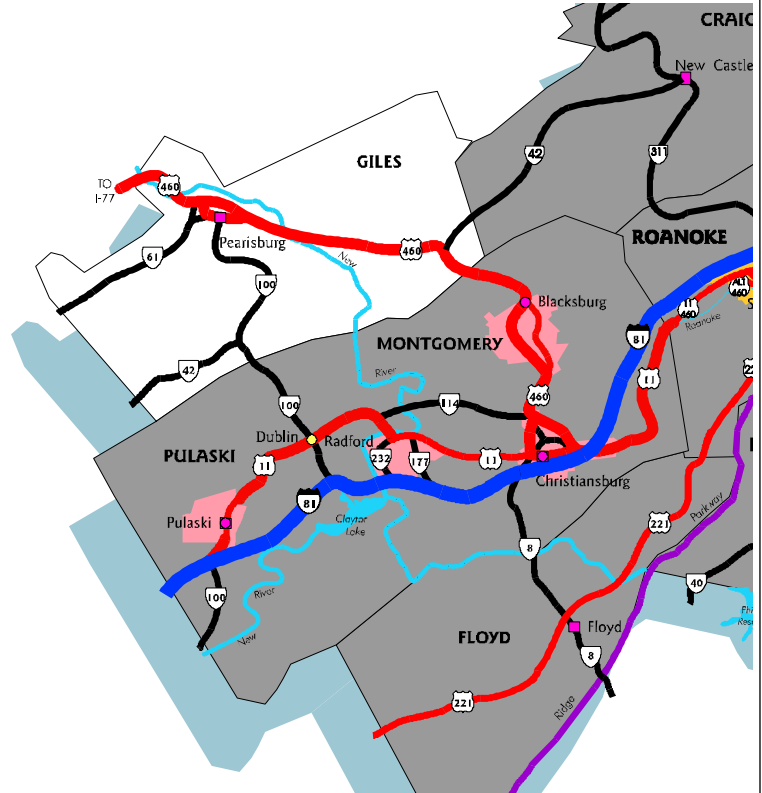


GILES COUNTY

LOCATION

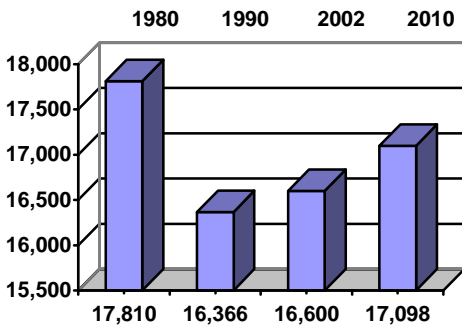
Giles County is located in the Allegheny Mountains in the southwest portion of Virginia on the border of West Virginia. The county has a long history of industrial development that began with the westward expansion of this country when early settlers developed extensive uses for the area resources.

Roanoke is 70 miles east; Richmond, the state capital, is 244 miles east; and Washington, D.C. is 300 miles northeast.



DEMOGRAPHICS

Population



97% white 3% nonwhite
 Median age: 40.2 years

Per Capita Personal Income (2001)

\$ 20,300

Civilian Labor Force

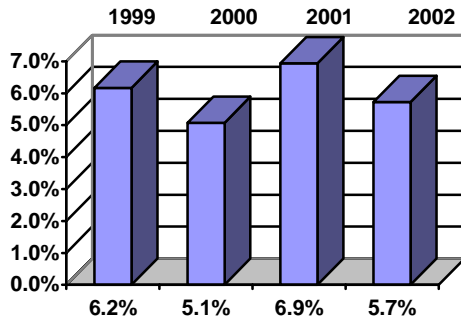
8,523 (1992) 8,317 (2002)

49% male
 51% female

Underemployed (3rd Quarter 2002)

746

Unemployment Rate



June 2003 = 4.7%

Employment by Sector (3rd Qtr. 2002)*

**	Natural Resources and Mining	N.A.
435	Construction	8.7%
802	Trade	16.0%
227	Transportation and Utilities	4.5%
1,440	Manufacturing	28.8%
45	Information	0.9%
96	Financial	1.9%
1,064	Services	21.3%
892	Government	17.8%
0	Other	0.0%
5,008	Total Employees	100%

*By Business Establishment

Employment by Occupation (2000 Census)*

1,820	Managerial, Professional & Related	24.7%
1,082	Service	14.7%
1,612	Sales & Office	21.9%
29	Farming, Fishing & Forestry	0.4%
1,025	Construction, Extraction & Maintenance	13.9%
1,799	Production, Transportation & Material Moving	24.4%
7,367	Total Employees	100%

*By Place of Residence

Educational Attainment (2000 Census)

Percentage of population 25 years and older who are high school graduates..... 75.9%

Percentage of population 25 years and older who have earned a Bachelor's Degree or higher 12.5%

Major Employers

Manufacturing

Celanese Corporation

1,000 - 1,499 (Cellulosic manmade fibers)

Chemical Lime Co. of Virginia, Inc.

100 - 299 (Lime)

Fairchild International

50 - 99 (Mining machinery)

Patrick Enterprises Corporation

20 - 49 (Industrial machinery)

Nonmanufacturing

American Electric Power

50 - 99 (Electric services)

Giles Memorial Hospital

100 - 299 (Healthcare)

Additional Labor Resources

HighSchool graduates
not continuing (2001-02) 51

Area community college
Graduates (2001-02) 372

Unemployed (2002) 476

Estimated Wages (September 2001)

<i>Occupations</i>	<i>Mean</i>	<i>Median</i>
Freight/Stock/Material Mover	hr./\$10.58	\$10.30
Hand Packer	\$7.86	\$7.60
Machinist	\$11.42	\$11.68
Industrial Machinery Mechanic	\$14.13	\$13.85
Industrial Truck and Tractor Operator	\$14.63	\$12.58
First-Line Production Supervisor/Manager	\$18.83	\$18.77
Team Assembler	\$10.79	\$10.88
Welder, Cutter, Solderer & Brazier	\$13.82	\$12.92
Inspector, Tester, Sorter, Sampler & Weigher	\$12.73	\$12.34
Truck Driver, Heavy & Tractor-Trailer	\$12.45	\$12.24
Cutting, Punching & Press Machine Operato	\$12.59	\$14.91
Textile Winding, Twisting & Drawing Out Machine	\$11.25	\$11.41
Textile Knitting & Weaving Machine Operat	\$10.87	\$10.86
Packaging & Filling Machine Operator	\$12.46	\$12.75
Supervisor/Manager of Office & Administrative Support	wk./\$690	\$668
Executive Secretary & Administrative Assistant	\$568	\$526
Computer Programmer	\$680	\$658
Computer Support Specialist	\$660	\$659
Computer Operator	\$608	\$582
Production, Planning & Expediting Clerk	\$556	\$514
Office Clerk	\$446	\$460
Bookkeeping, Accounting & Auditing Clerk	\$416	\$411
Shipping, Receiving, and Traffic Clerk	\$449	\$454

Greenbrier Valley Airport 40.6 miles
Delta Air Lines
US Airways

Roanoke Regional Airport 43.2 miles
Atlantic Southeast Airlines
Comair
Northwest Airlinck
United Express
US Airways

General Aviation Service
New River Valley Airport
Virginia Tech Airport

Freight Rail Service
Norfolk Southern Corporation

Port
Richmond 244 miles
Norfolk..... 320 miles

Overnight Package Delivery
Federal Express, U.P.S., and U.S. Mail Express serve this area.

TRANSPORTATION

Interstates

I-81 (23 miles south)
I-77 (17 miles west)

Highways

U.S. #460 (east-west)

Commercial Air Service

Mercer County Airport 24.9 miles
US Airways
US Airways Express

Raleigh County Memorial Airport 36.6 miles
US Airways Express

UTILITIES

Electric

American Electric Power

Natural Gas

Columbia Gas of Virginia

Telecommunications

Local Service

Pembroke Telephone Cooperative
Verizon South
Verizon-Virginia

Water

Giles County Public Service Authority
 Town of Glen Lyn
 Town of Pearisburg
 Town of Pembroke
 Town of Rich Creek

Waste Water Treatment

Town of Glen Lyn
 Town of Pearisburg
 Town of Pembroke
 Town of Rich Creek

Solid Waste Disposal

Montgomery County Sanitary Landfill
 Mercer County Sanitary Landfill

FINANCIAL INSTITUTIONS

<i>Banks</i>	<i>2001 Assets (in millions)</i>
First Virginia Bank-Southwest	\$1,418.7
First National Bank-Christiansburg	588.6
National Bank of Blacksburg	358.0
Grundy National Bank	210.5

GOVERNMENT

Giles County has a County Administrator and a five-member Board of Supervisors.

The county has a comprehensive plan and a subdivision ordinance.

Pearisburg is the county seat. Other incorporated towns are Glen Lyn, Narrows, Pembroke and Rich Creek.

TAXES

Localities in Virginia collect a 1% sales tax. They do not tax other items taxed at the State level.

Counties and cities in Virginia are separate taxing entities. Therefore, a company pays taxes to either a county or to a city.

If a company is located in a town, it pays town and county taxes except for utility taxes which are paid only to the town and the license tax which is paid only to the town unless town law permits the additional collection of a county tax.

Manufacturers pay real estate, machinery and tools, truck and automobile, utility, and sales taxes.

Nonmanufacturers pay real estate, tangible personal property, truck and automobile, utility, and sales taxes. They also may pay either a merchants' capital or a license tax.

EDUCATION

	<i>Number</i>	<i>Fall 2002 Enrollment</i>
Elementary	3	1,548
High School	2	1,014

Student Teacher Ratio (2000-01)

Elementary14:1
 Secondary10:1

Per pupil expenditure (2001-02)\$6,567

Percentage of 1998-99 ninth grade membership graduating (2001-02)..... 90.7%

Percentage of high school graduates continuing education (2001-02) 69.1%

Private Schools

<i>School</i>	<i>Grades</i>
Jefferson Christian Academy	K-12

Vocational Training Facilities

PATS (Positive Attitude Toward School)
 Giles High School
 Giles County Technical Center
 Narrows High School

Higher Education Facilities

	<i>Fall 2002 Enrollment</i>
Virginia Polytechnic Institute	28,027
Radford University	9,242
New River Community College	3,938
Bluefield College	858
National College of Business & Technology - Bluefield Campus	234

CLIMATE

Average January temperature 36°F.....2°C
 Average July temperature 74°F.....23°C

Average annual rainfall 35.25"
 Average annual snowfall 15.90"

COMMUNITY FACILITIES

Giles Memorial Hospital in Pearisburg is a 65-bed facility offering general medical services that include 24-hour emergency care and a newly completed 21-bed intermediate care facility for the elderly. The Roanoke Memorial Hospital helicopter transport unit also services the hospital.

Giles County also has a 60-bed nursing home in Rich Creek that provides long-term care to elderly residents and a retirement home in Narrows that accommodates 31 residents.

Twelve physicians and eight dentists practice in the county.

The county has four independent library systems in Pearisburg, Narrows, Glen Lyn and Pembroke with a combined collection of over 40,000 volumes. Area residents can also utilize the library facilities at Virginia Tech in Blacksburg and nearby Radford University.

Giles County has over 70 places of worship representing most Protestant denominations and the Roman Catholic faith. A Jewish synagogue is located approximately 25 miles away in Bluefield.

A variety of shopping opportunities are available to area residents. Approximately 200 retail outlets are dispersed throughout the county. A broad mix of retail establishments can be found in the downtown areas of Pearisburg, Narrows, Rich Creek and Pembroke and the two shopping centers located in the county.

LIFE STYLE

Giles County, renowned for its scenic beauty, offers numerous cultural and recreational activities for the enjoyment of area residents. The Giles Little Theater in Pearisburg produces several plays during the year. The Giles County Historical Society conducts tours of area historical sites and organizes special shows throughout the year that highlight the county's rich heritage.

The Jefferson National Forest and the Appalachian Trail offer hiking, camping and picnicking for visitors and residents. Hunting and fishing opportunities are also available in the vast forests and numerous streams located throughout the county.

Area residents can participate in a variety of public and private recreational pursuits. Castle Rock Recreational Facility in Pembroke has an 18-hole golf course, swimming, camping and tennis facilities. Another nine-hole golf course is located in Pearisburg at the Giles Country Club. Mountain Lake Resort, which has conference facilities, offers swimming, boating, fishing, tennis, golf, and horseback riding.

Town festivals are held during the summer and fall that celebrate folk art, community heritage and various seasonal events.

Nearby Virginia Tech and Radford University sponsor lectures, concerts, art exhibits and numerous athletic events which the general public can attend.